



ChemBridge Corporation
16981 Via Tazon, Suite G
San Diego, CA. 92127

Certificate of Analysis

EphA2,10 µg

Recombinant Human EPH Receptor A2, Histidine-tagged
Cat Number: BIOTK-EphA2
Lot Number: 3-08

Send inquiries & orders to:
e-mail: support@chembridge.com
Phone: (858) 451-7400; Option 4,
Fax: (858) 451-7401

Description:

Recombinant Human protein, Catalytic Domain (amino acids 562-976), Histidine-tagged, expressed in insect cells. No special measures were taken to activate this kinase.

Specific Activity:

49 nmole of phosphate transferred to Poly E₄Y peptide substrate (Sigma, P0275) per minute per mg of total protein at 30°C. Activity determined at a final protein concentration of 3.4 µg/mL.

Protein Concentration:

0.2 mg/mL total protein as measured using the Bradford protein assay with BSA as a standard.

Storage and Handling:

Store at -80°C for long time. At first use, aliquot and to avoid multiple freeze-thaw cycles. If properly stored at -80°C, this product is guaranteed for 12 months from date of purchase. **Protein stable for 6 months at -20°C, for 3-5 h at 4°C and not stable at room temperature.**

Storage Buffer:

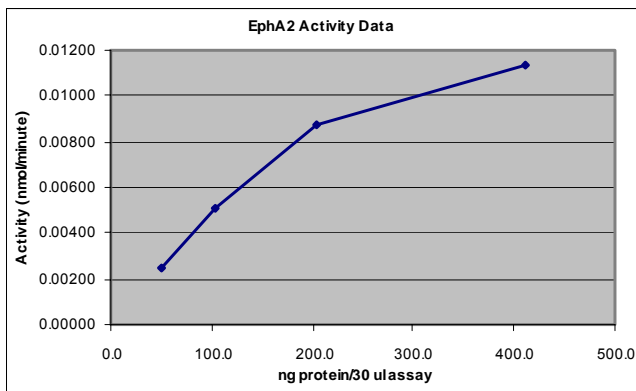
50 mM Tris (pH 7.5), 150 mM NaCl, 0.02% Triton® X-100, 2 mM DTT, 50% Glycerol

Enzyme Dilution Buffer:

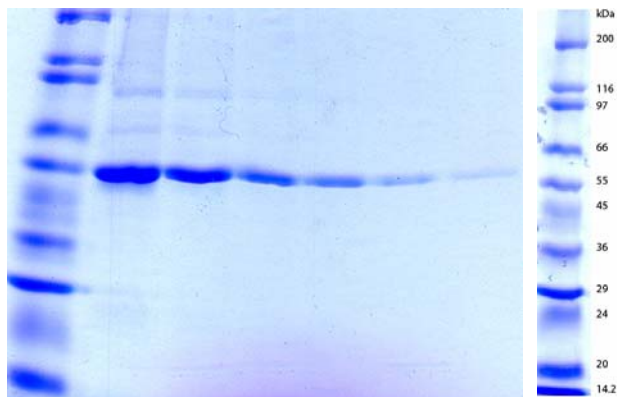
50 mM Tris (pH 7.5), 10% Glycerol, 0.02% Triton® X-100, 0.1 mg/mL BSA, 0.5 mM Na₃VO₄, 2 mM DTT

Quality Assurance

Activity Graph:



PAGE Description:



The SDS-PAGE was run on a 10 well 4-20% Tris-Glycine Novex gel (Catalog #: EC6025BOX).

Lane 1: SigmaMarker, Wide Range, Molecular Weight (Catalog#: S8445, Sigma)

Lane 2: 3 µg EphA2

Lane 3: 1.5 µg EphA2

Lane 4: 0.75 µg EphA2

Lane 5: 0.375 µg EphA2

Lane 6: 0.187 µg EphA2

Lane 7: 0.0937 µg EphA2

Assay Conditions:

The enzyme was pre-diluted in enzyme dilution buffer and assayed in 50 mM Tris (pH 7.5), 0.01% Tween-20, 5 mM MgCl₂, 5 mM MnCl₂, 0.5 mM Na₃VO₄, 2 mM DTT, 10 µM ATP, 50 µg Poly E₄Y peptide substrate per reaction and trace [³²P]-γ-ATP for 10 minutes at 30°C.

Purity:

≥80% as determined by a Coomassie blue-stained SDS-PAGE gel.

Molecular Weight:

53 kDa calculated from the sequence below.

Protein Sequence:

```
MSYYHHHHHH DYDIPTTENL YFQGAMGSRR KNQRARQSPE DVYFSKSEQL KPLKTYVDPH TYEDPNQAVL KFTTEIHPSV VTRQKVIAG EFGEVYKGL 100
KTSSGKKEVP VAIKTLKAGY TEKQRVDFLG EAGIMQFSH HNIIRLEGVI SKYKPMIIT EYMENGALDK FLREKDFEFS VLQLVGMLRG IAAGMKYLAN 200
MNYVHRDLAA RNILVNSNLV CKVSDFGLSR VLEDDPEATY TTSGGKIPIR WTAPPAISYR KFTSASDVWS FGIVMWEVMT YGERPYWELS NHEVMKAIND 300
GFRLPTPMD C PSALYQLMMQ CWQERARRP KFADIVSILD KLIRAPDSLK TLADFDPRVS IRLPSTSGSE GVPFRTVSEW LESIKMQQYT EHFMAAGYTA 400
IEKVVQMTND DIKRIQVRLP GHQKRIAYSL LGLKDQVNTV GIPISRLVAA AFESRACSLD ACGTKLVEKY. 471
```

562-976 amino acids from EphA2 (GenBank Accession Number NP_004422) in bold.