



## Certificate of Analysis

### EGFRa, 10 µg

Recombinant Human Epidermal Growth Factor Receptor isoform A,  
Histidine-tagged  
Cat Number: BIOTK-EGFRa  
Lot Number: 3-08

ChemBridge Corporation

16981 Via Tazon, Suite G

San Diego, CA. 92127

Send inquiries & orders to:

e-mail: [support@chembridge.com](mailto:support@chembridge.com)

Phone: (858) 451-7400; Option 4,

Fax: (858) 451-7401

#### Description:

Recombinant Human protein, Catalytic Domain (amino acids 671-1210), Histidine-tagged, expressed in insect cells. No special measures were taken to activate this kinase.

#### Specific Activity:

61.6 nmole of phosphate transferred to Poly E<sub>4</sub>Y peptide substrate (Sigma, P0275) per minute per mg of total protein at 30°C. Activity determined at a final protein concentration of 3.4 µg/mL.

#### Protein Concentration:

0.16 mg/mL total protein as measured using the Bradford protein assay with BSA as a standard.

#### Storage and Handling:

Store at -80°C for long time. At first use, aliquot and to avoid multiple freeze-thaw cycles. If properly stored at -80°C, this product is guaranteed for 12 months from date of purchase. **Protein stable for 6 months at -20°C, for 3-5 h at 4°C and not stable at room temperature.**

#### Storage Buffer:

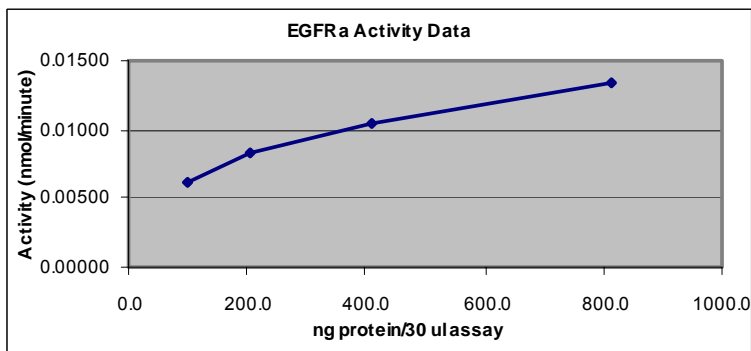
50 mM Tris (pH 7.5), 150 mM NaCl, 0.02% Triton® X-100, 2 mM DTT, 50% Glycerol

#### Enzyme Dilution Buffer:

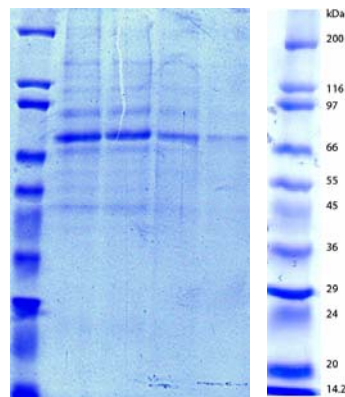
50 mM Tris (pH 7.5), 10% Glycerol, 0.02% Triton® X-100, 0.1 mg/mL BSA, 0.5 mM Na<sub>3</sub>VO<sub>4</sub>, 2 mM DTT

## Quality Assurance

### Activity Graph:



### PAGE Description:



#### Assay Conditions:

The enzyme was pre-diluted in enzyme dilution buffer and assayed in 50 mM Tris (pH 7.5), 0.01% Tween-20, 5 mM MgCl<sub>2</sub>, 5 mM MnCl<sub>2</sub>, 0.5 mM Na<sub>3</sub>VO<sub>4</sub>, 2 mM DTT, 10 µM ATP, 50 µg Poly E<sub>4</sub>Y peptide substrate per reaction and trace [<sup>32</sup>P]-γ-ATP for 10 minutes at 30°C.

#### Purity:

≥65% as determined by a Coomassie blue-stained SDS-PAGE gel.

#### Molecular Weight:

67 kDa calculated from the sequence below.

The SDS-PAGE was run on a 10 well 4-20% Tris-Glycine Novex gel (Catalog #: EC6025BOX).

**Lane 1:** SigmaMarker, Wide Range, Molecular Weight (Catalog# S8445, Sigma)

**Lane 2:** 2 µg EGFRa

**Lane 3:** 1 µg EGFRa

**Lane 4:** 0.5 µg EGFRa

**Lane 5:** 0.25 µg EGFRa

## Protein Sequence:

```
MSYYHHHHHH DYDIPTTENL YFQGAMGSRH IVRKRTLRLR LQERELVEPL TPSGEAPNQA LLRILKETEF KKIKVLGSGA FGTVYKGLWI PEGEKVKIPV 100
AIKELREATS PKANKEILDE AYVMASVDNP HVCRLLGICL TSTVQLITQL MPFGCLLDYV REHKDNIGSQ YLLNWCVQIA KGMNYLEDRR LVHRDLAARN 200
VLVKTQHVK ITDFGLAKLL GAEEKEYHAE GGVPIKQWMA LESILHRIYT HQSDVWSYGV TVWELMTFGS KPYDGIPASE ISSILEKGER LPQPPICTID 300
VYMIMVKCWM IDADSRPKFR ELIIIEFSKMA RDPQRYLVIQ GDERMHLPS TDSNFYRALM DEEDMDDVVD ADEYLIPQQG FFSSPSTSRP PLLSSLSATS 400
NNSTVACIDR NGLQSCPIKE DSFLQRYSSD PTGALTEDSI DDTFLPVPEY INQSVKRPAP GSVQNFVYHN QPLNPAPSRD PHYQDPHSTA VGNPEYLNTV 500
QPTCVNSTFD SPAHWAQKGS HQISLDNPDY QQDFFPKEAK PNGIFKQSTA ENAEYLRVAP QSSEFIGAST SSLVAAAFES RACSLACGT KLVEKY. 597
```

671-1210 amino acids from EGFRa (GenBank Accession Number NP\_005219) in bold.